



Cheryl L. Perry, PhD
Regional Dean and Professor
Rockwell Chair in Society and Health

Guy S. Parcel, PhD
Professor
John P. McGovern Professor in Health Promotion

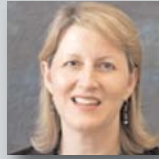
Contact us:

The University of Texas
School of Public Health
Austin Regional Campus
313 E. 12th Street, Suite 220
Austin, TX 78701

512-482-6160
austinregionalcampus@uth.tmc.edu



www.sph.uth.tmc.edu/austin



Deanna M Hoelscher, PhD
Professor
Director, Michael & Susan Dell Center for Healthy Living



Harold (Bill) Kohl, PhD
Professor
Director, Physical Activity Epidemiology Program



Ronald Harrist, PhD
Associate Professor



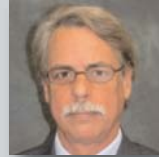
Andrew Springer, DrPH
Assistant Professor



Shelton Brown, PhD
Associate Professor



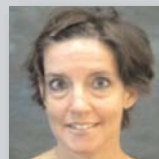
Steven Kelder, PhD
Beth Toby Grossman Professor
Co-Director, Michael & Susan Dell Center for Healthy Living



Alfred McAlister, PhD
Professor



Alexandra (Sandra) Evans, PhD
Associate Professor



Melissa Stigler, PhD
Assistant Professor

THE UNIVERSITY OF TEXAS
School of Public Health

Austin

REGIONAL CAMPUS



THE UNIVERSITY of TEXAS
SCHOOL OF PUBLIC HEALTH

Austin Regional Campus

Cheryl L. Perry, PhD

Regional Campus Dean

BACKGROUND

The Austin Regional Campus was established in 2007 to conduct public health research and to offer graduate-level training in public health to Austin and the Central Texas region. The Texas Department of State Health Services is located in Austin, and the Austin regional campus makes core and advanced training in public health available to the state health department workers, other health professionals, and exceptional recent graduates of UT Austin, and facilitates research and development to advance and evaluate public health programs and services. UT Austin's excellent academic programs and outstanding faculty in the social, political, biological and behavioral sciences offer expertise that will enhance the experience of graduate students of the MPH program. Affiliation and collaboration with UT Austin will deepen and broaden the research and teaching programs in public health in Austin and throughout the country.

MPH PROGRAM

Students attending the Austin Regional Campus can complete a general Master of Public Health degree (MPH). Requirements for the MPH degree include:

Exposure to the breadth of public health through coursework in epidemiology, biostatistics, behavioral and social sciences, environmental health, and management and policy sciences

- Engagement in a practicum
- Completion of a culminating experience
- Completion of at least 45 credit hours



CERTIFICATE PROGRAM IN PUBLIC HEALTH

The University of Texas School of Public Health offers a graduate Certificate in Public Health, a 16 hour program of study which allows professionals in the community and interested prospective students to take courses covering the core disciplines of public health.

Certificate and MPH students will participate in core classes together either in person in Austin or via ITV or online. Classes will be offered at the UTSPH campus in Houston, at the five UTSPH Regional Campuses (Austin, Brownsville, Dallas, El Paso and San Antonio) either in person or by ITV, and as online courses.

For more information visit the Certificate Program website at: www.sph.uth.tmc.edu/cert/default.aspx.

FACULTY AND RESEARCH

Austin Regional Campus faculty members have expertise in epidemiology, health promotion and behavioral sciences, health economics, and biostatistics. The research of the Austin Regional Campus faculty support public health practice related to the population and health needs of Austin and the Central Texas and beyond. Examples of research interests include:

- Child and adolescent health
- Obesity prevention
- Public health policy

The Michael & Susan Dell Center for Advancement of Healthy Living is located at the Austin campus but is also affiliated with faculty in Houston and at the Brownsville Regional Campus. The Michael & Susan Dell Center for Advancement of Healthy Living, directed by Dr. Deanna Hoelscher, has a vision of 'healthy children in a healthy world' and its mission is to

serve as a state, national and international leader in the promotion of healthy living. The Dell Center for Healthy Living seeks to achieve this through prevention and control of childhood obesity through healthy eating and physical activity, promotion of healthy living behaviors in youth, policy and environmental change, and professional education and community service.

OUTREACH AND COMMUNITY-BASED PROJECTS

The Austin Regional Campus is involved in a variety of community based research projects in Central Texas, the nation, and the world. Research projects include:

- CATCH (Coordinated Approach To Child Health), designated as a Texas Education Agency Coordinated School Health Program designed to promote physical activity, healthy food choices, and prevent tobacco use in elementary school aged children;
- CATCH in Travis County, a study of the dissemination of CATCH in all Travis County public elementary schools to reduce overweight and obesity;
- IMPACT (Incorporating More Physical Activity and Calcium in Teens), a project to develop and evaluate a school-based physical activity and nutrition program to enhance future bone health in girls;
- SPAN (School Physical Activity and Nutrition Project), a surveillance system to monitor the prevalence of overweight/obesity in school-aged children in Texas;
- Project ACTIVITY (Advancing Cessation of Tobacco In Vulnerable Indian Tobacco Consuming Youth), is a group-randomized, controlled intervention trial designed to develop, implement, and test the efficacy of a compre-



hensive, community-based tobacco control intervention program for disadvantaged youth (10-19 yr) in Delhi, India;

- The ENRICH Project, an intervention for Residential Children's Homes' (RCH) environments that support and promote healthful eating and physical activity among youth;
- MACC – Minnesota Adolescent Community Cohort which documents the incidence, prevalence, and progression of tobacco use among adolescents in Minnesota;
- Project MYTRI (Mobilizing Youth for Tobacco-Related Initiatives in India), a randomized controlled trial to develop, implement, and evaluate the efficacy of a tobacco prevention intervention for school-going youth in urban India.

ADMISSION REQUIREMENTS

Applicants to the general MPH will be required to apply using the Schools of Public Health Application Service (www.sophas.org). Application to the Certificate Program is online (<http://www.sph.uth.tmc.edu/cert/default.aspx>).

Application Deadlines: MPH Program: August 1 for Spring semester, February 1 for Fall semester. Certificate in Public Health: October 15 for Spring admission, March 15 for Summer admission, and July 1 for Fall admission. General requirements include:

- GPA - 3.0 or greater
- TOEFL – A minimum score of 565 for paper based tests and 225 for computer based tests. TOEFL not required for permanent residents
- GRE – Minimum combined Verbal and Quantitative score of 1000
- Online application including Statement of Purpose describing career goals in public health
- Two letters of recommendation
- Official transcripts of all post secondary work
- \$95.00 Minimum SOPHAS Application Fee

