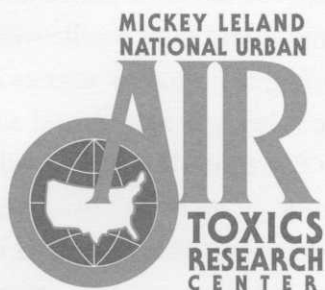


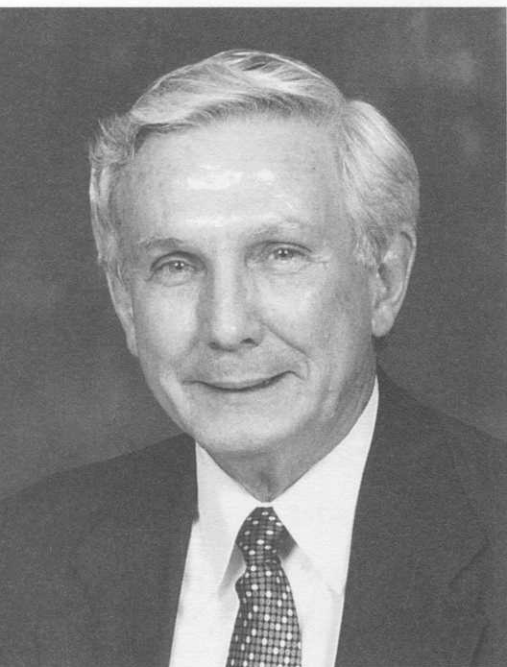
**MICKEY LELAND NATIONAL URBAN AIR
TOXICS RESEARCH CENTER**

Report OF THE *Years*

1998 AND 1999



LETTER *from the* PRESIDENT *and the* BOARD CHAIRMAN



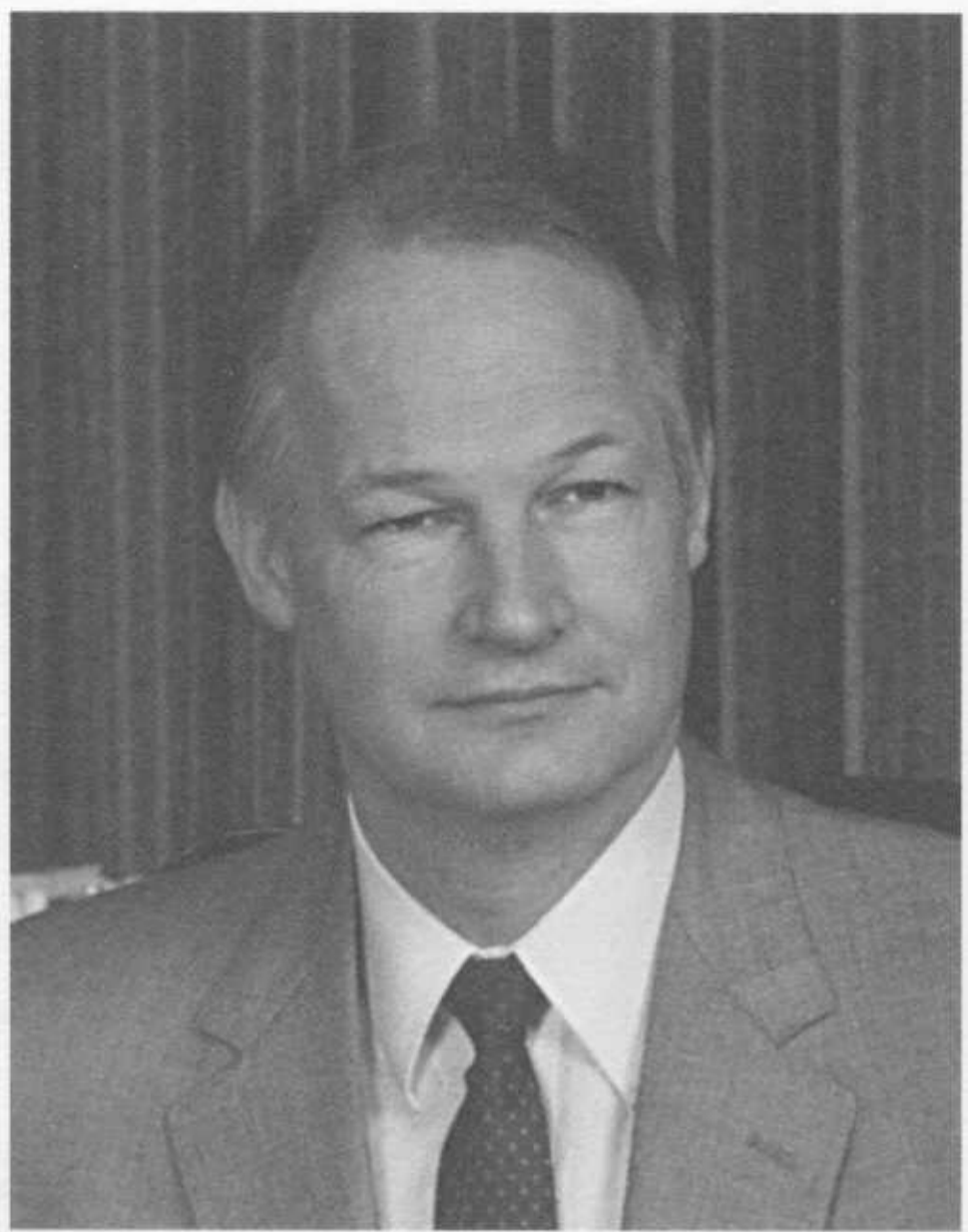
Raymond J. Campion, Ph.D.
President

The development of the Report of the Years 1998 and 1999 offers those associated with an organization like the Mickey Leland National Urban Air Toxics Research Center (NUATRC) the opportunity to step back and consider the progress made and outlook for, in this case, a non-profit environmental and public health research institution. That reflection allows us to realize how far we have come and importantly, how far we have to go.

The earliest years of the Center's existence, as cataloged in our initial Annual Report, were indeed formative, as we worked to solidify the organizational structure, define our mission, and secure the necessary financing to move forward. At the end of 1997, we had that system in place and had let our first research awards, with financial assistance from the U. S. EPA and a dedicated and supportive group of private sector companies. In the years 1998-1999, which embrace the period of this report, the NUATRC attained a national presence in the environmental and scientific communities with a small but highly focused research program that is totally consistent with our mission and congressional charge.

We are gratified at the successful road that the NUATRC has taken. It is imperative for a private/public research partnership, as envisioned by the Congress and the President, to be seen by both the scientific community and the public as being an "honest broker" in the complex and high profile world of environmental health science. Our goal of providing high quality science in these areas via publication in the peer-reviewed literature is being achieved, and additional research work to expand these contributions is well underway and will come to fruition in such publications in the near future. The NUATRC research should help provide information on the potential risks to public health from inhalation of air toxics from outdoor and indoor sources and from personal activities. These results will help address the limitations of the current emphasis on outdoor sources in terms of assessing public health risks from air toxics. We are glad that our government and private sector support through the Congress, EPA, and private sources has remained

firm in the commitment to these goals, recognizing the time lag between program inception and research conclusions. We have established a solid base for these studies and are delighted that they are progressing with so much support by our sponsors.



James M. Lents, Ph.D.
Chairman of the Board of Directors

The NUATRC has followed its research directions as outlined in our initial Strategic Research Plan. The next several years will be critical for the Center to demonstrate that the support we currently have can be maintained and built upon to produce a world-class research program that will address those important social questions surrounding public health risks in a changing and complex society. We face a real need to generate considerably more research funding to continue the research program expansion now underway. We are just at the beginning of the risk assessment process for air toxics and the next several years will be telling as to the actual societal impact of these materials. The Leland Center is positioned to be a major player in those assessments.

Sincerely,

A handwritten signature in cursive script that reads "Raymond J. Campion". The signature is fluid and elegant, with the first letters of the first and last names being capitalized and prominent.

Raymond J. Campion, Ph.D.
President

A handwritten signature in cursive script that reads "J M Lents". The signature is more compact and stylized than the one to its left, with the first letters of the first and last names being capitalized and prominent.

James M. Lents, Ph.D.
Chairman of the Board of Directors

