

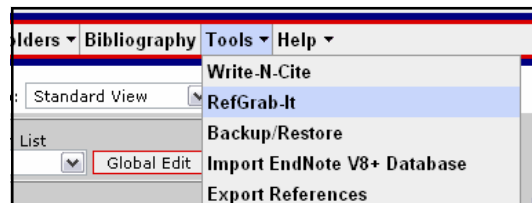
RefWorks: RefGrabIt!

Overview

RefGrab-It! is the newest tool from **RefWorks** which allows you to capture bibliographic information from a webpage to be imported into **RefWorks**. It takes seconds to install and use.

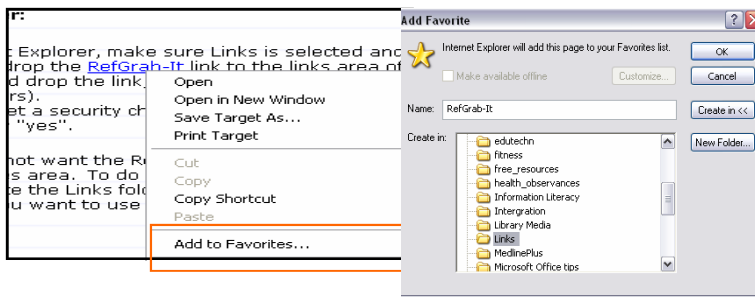
Step 1: Adding **RefGrab-It!** to a browser favorites list

1. Log into **RefWorks**.
2. Click on the **Tools**▼ tab, then **RefGrab-It**.
3. Find your browser below for the next few steps:



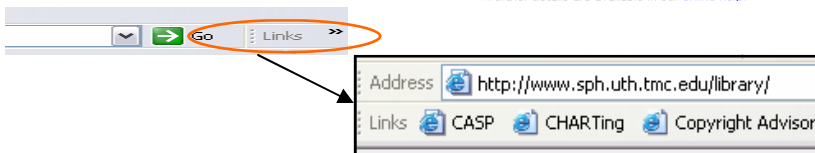
Internet Explorer

1. Scroll down to the section on IE.
2. Right click on the **RefGrab-It!** Link
3. Click **Add to Favorites**.
4. Click "yes" if you get a security challenge.
5. Select **Create in: Links** as the folder.



Can't see the link bar?

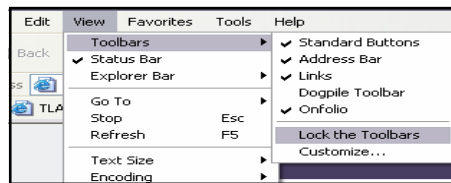
1. Right click on the links bar.
2. Drag it below the search box (as shown here).



Can't move or add to the link bar?

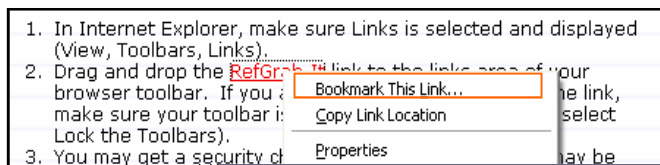
Your toolbar may be locked. To unlock it:

1. Click on the **View** tab.
2. Select **Toolbars**
3. Deselect **Lock the Toolbars**



Firefox

1. Scroll down to the section on FireFox.
2. Right click on the **RefGrab-It!** link and click **Bookmark This Link ...**
3. Select **Create in: Bookmarks Toolbar Folder**.

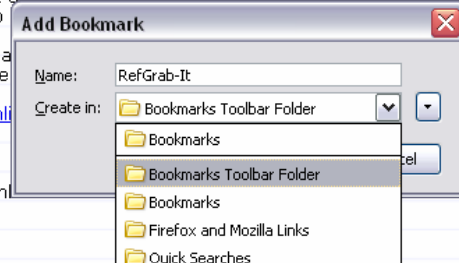


Netscape

RefGrab-It! is not currently compatible with this browser.

Mac users

1. Open Firefox or Netscape.
2. Drag and drop the **RefGrab-It!** link to your browser toolbar.



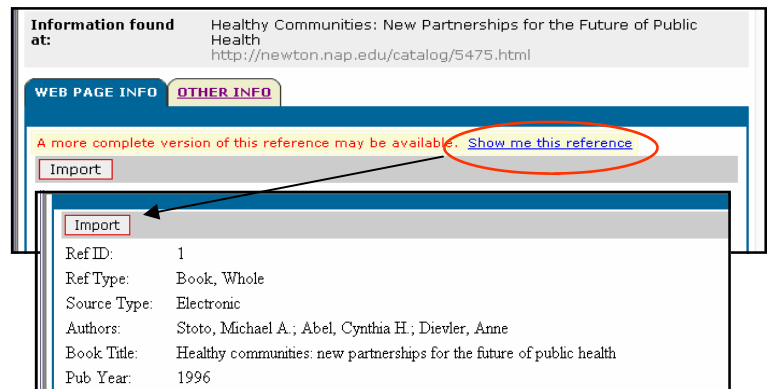
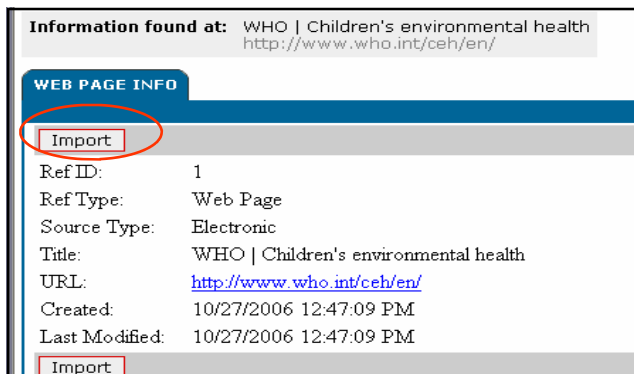
UT SCHOOL OF PUBLIC HEALTH LIBRARY

Step 2: Using *RefGrab-It!* to import webpage information into *RefWorks*

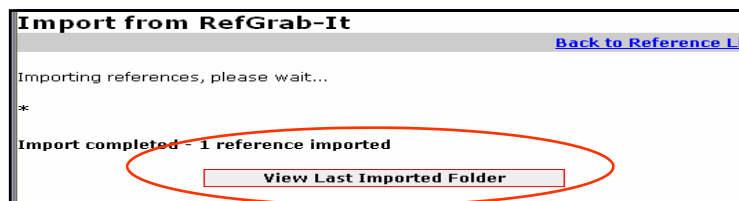
1. Log into RefWorks. Then, while searching the web, you can click on the *RefGrab-It!* link at any time to grab the page's information.



2. Once you click on *RefGrab-It!* a new page will open. Click **Import**. If the record says "A more complete version of this reference may be available." Click [Show me this reference](#) and then **Import**.



3. Click **View Last Imported Folder** to view the citation and move it into a folder.



4. If you want to edit the record, click **Edit** next to the citation. You may also need to change the reference type if it is an online book or report. You may need to add information into the author's field, as this is not often filled out by *RefWorks* for websites. Be sure to click **Save Reference** when you are finished.

